



Penngrove Traffic Study Town Hall

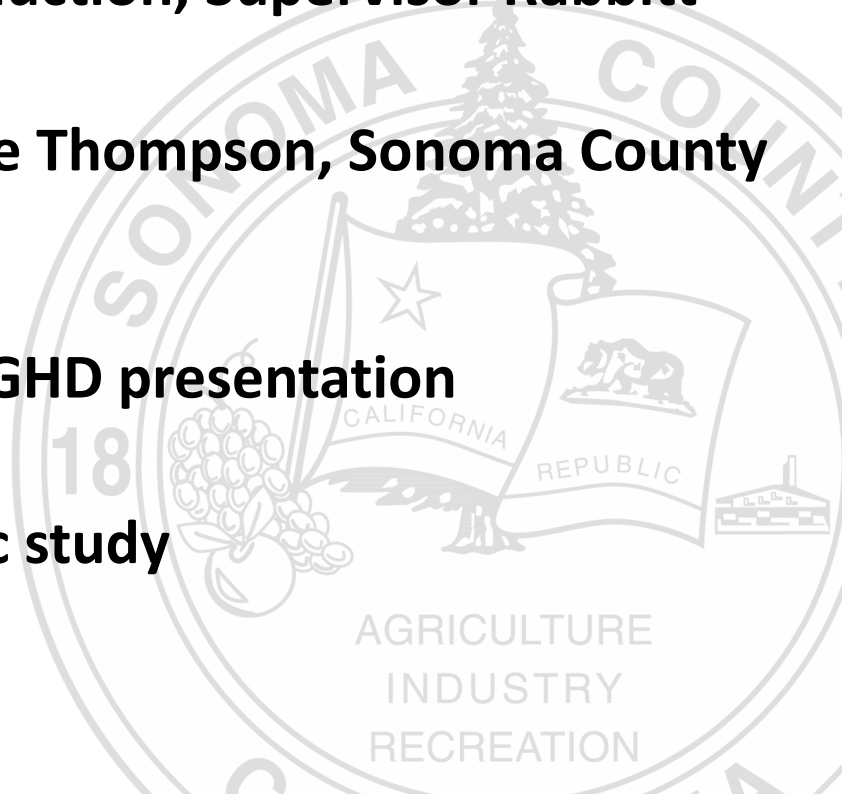
Hosted by Supervisor David Rabbitt and GHD Consulting

May 4, 2023



Agenda

- **Welcome and topic introduction, Supervisor Rabbitt**
- **Speed limits, AB 43, Janice Thompson, Sonoma County Public Infrastructure**
- **Traffic Study Consultant, GHD presentation**
- **Public Comment on traffic study**
- **Next steps and closing**





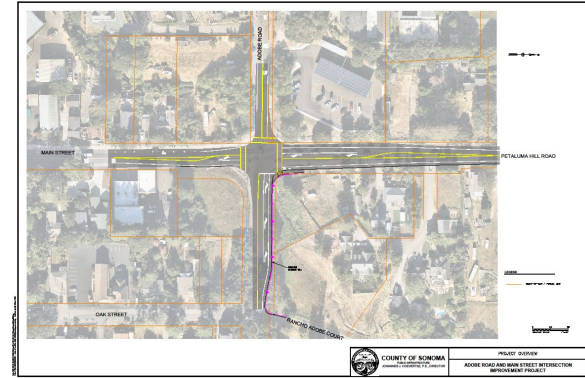
Spanish and ASL translation

- **Available online:**
<https://sonomacounty.zoom.us/j/97368142968?pwd=V2RRRIRIN3g2UFJoc3FGaGdONjhFdz09>
- **Computers and earphones are available online here as well.**
- **A recording of this town hall will be posted online on the District 2 homepage.**
- **For our online audience comments and questions can be sent to district2@sonoma-county.org.**



Upcoming Projects in Penngrove

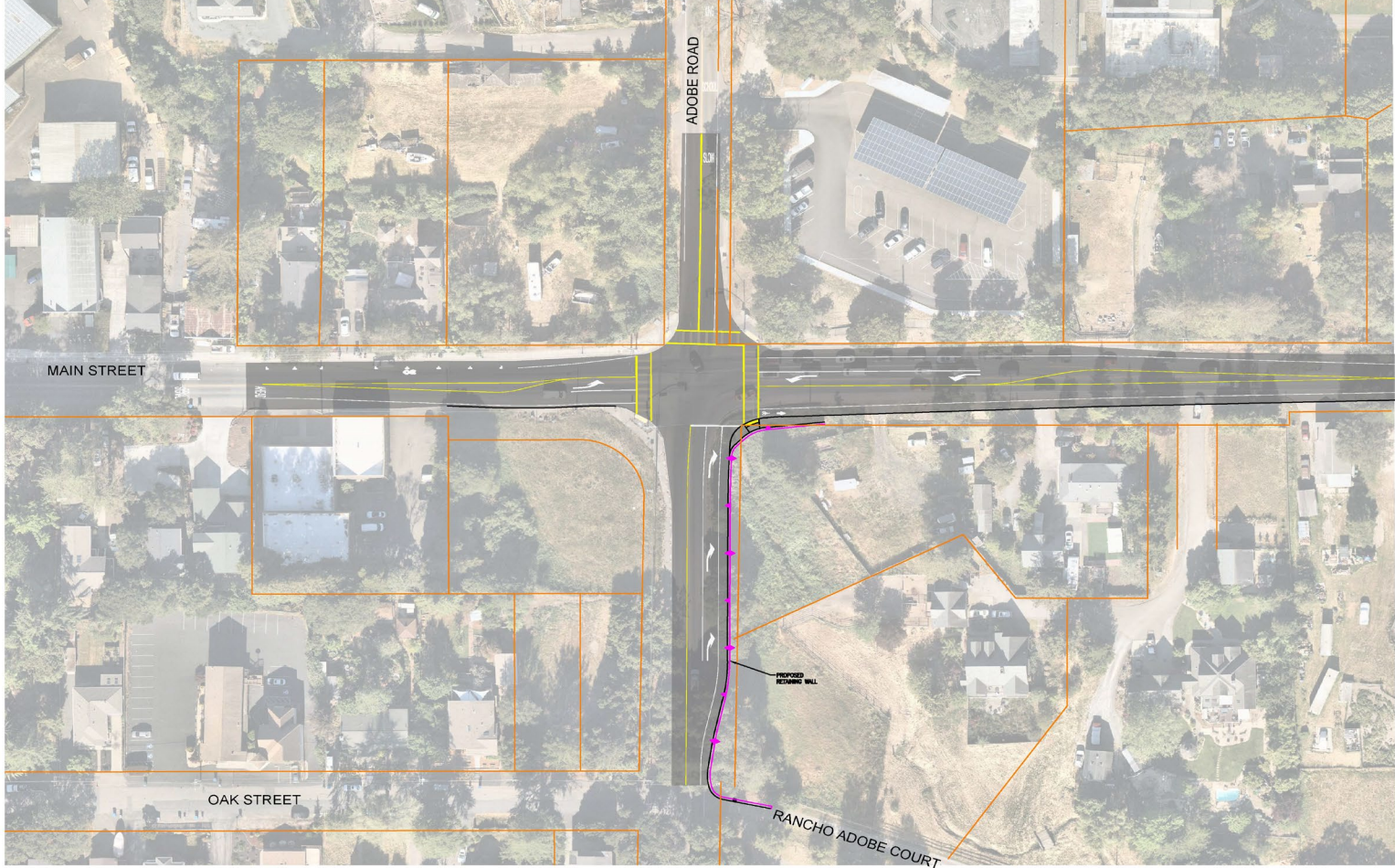
- Adobe Road intersection improvements
- Main Street Hillside work
- Woodward sidewalk work
- Penngrove banners
- SMART Bike Pedestrian Trail



-South Point to Main Street Penngrove (construction set to begin Spring 2024)

Rule 20A funding for undergrounding utility overhead lines on Main Street Penngrove secured by Supervisor Rabbitt

AGRICULTURE
INDUSTRY
RECREATION



MAIN STREET

ADOBE ROAD

PETALUMA HILL ROAD

OAK STREET

RANCHO ADOBE COURT

PROPOSED
RETAINING WALL

LEGEND
 ——— RIGHT-OF-WAY / PARCEL LINE



THE INFORMATION CONTAINED HEREIN IS FOR GENERAL INFORMATION ONLY AND DOES NOT CONSTITUTE AN OFFER OF ANY FINANCIAL PRODUCT OR SERVICE.



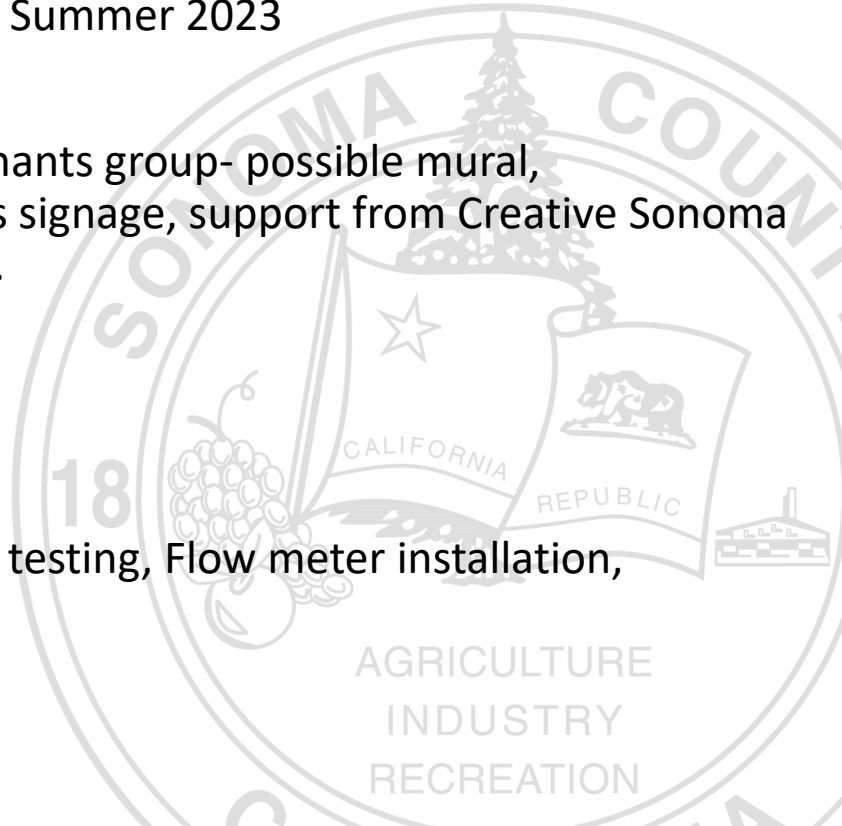
COUNTY OF SONOMA
 PUBLIC INFRASTRUCTURE
 JOHANNES J. HOEVERTSZ, P.E., DIRECTOR

PROJECT OVERVIEW
**ADOBE ROAD AND MAIN STREET INTERSECTION
 IMPROVEMENT PROJECT**

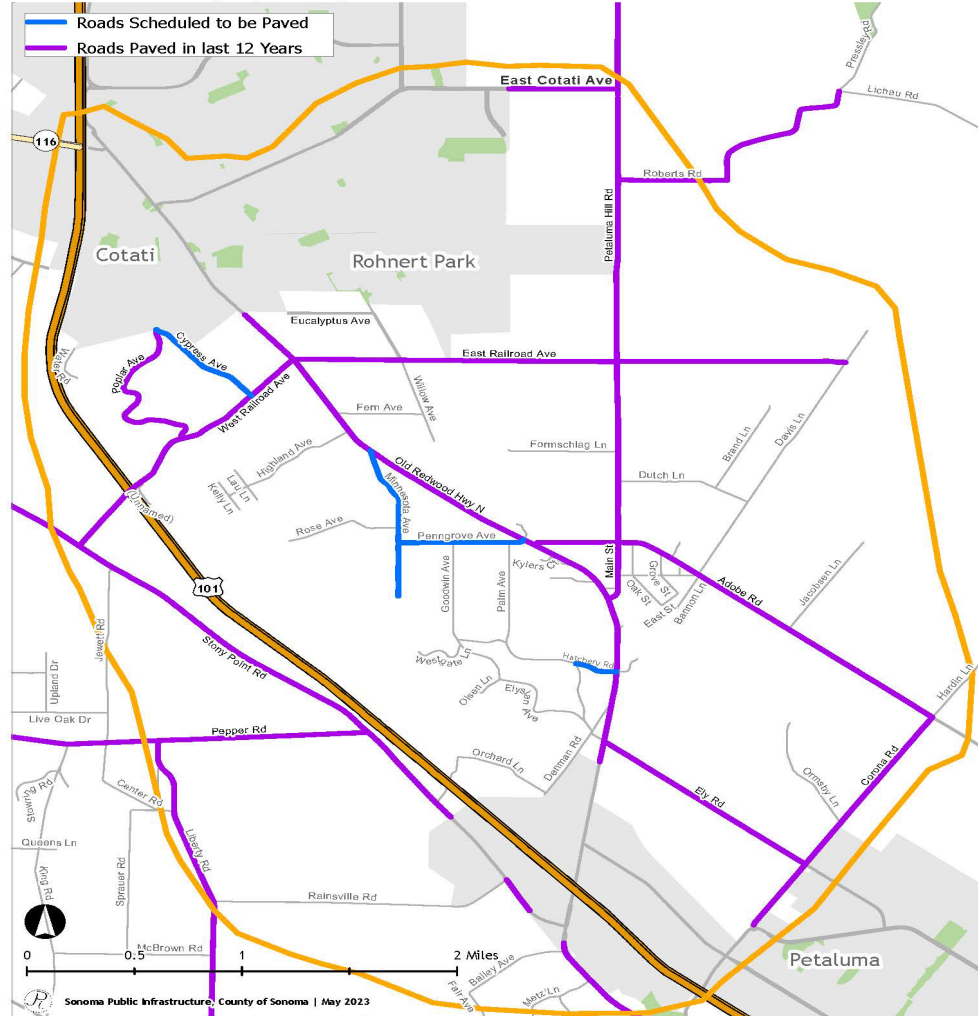


Upcoming Projects in Penngrove

- Lichau Creek Maintenance project- Summer 2023
- Ongoing support to business merchants group- possible mural, encroachment permits for business signage, support from Creative Sonoma and Economic Development Board.
- Pavement
- Penngrove Sanitation Zone -Smoke testing, Flow meter installation, installation of SMART covers.



Road Pavement and Safety Projects Penngrave



Traffic study background

- How we got here
- Where do we go from here
- Additional factors to consider- RHNA
- Mitigation program in place

| Jurisdiction | VERY LOW INCOME (<50% of Area Median Income) | LOW INCOME (50-80% of Area Median Income) | MODERATE INCOME (80-120% of Area Median Income) | ABOVE MODERATE INCOME (>120% of Area Median Income) | TOTAL |
|---------------------|---|--|--|--|--------------|
|---------------------|---|--|--|--|--------------|

SOLANO COUNTY

Jurisdictions in Solano County formed a subregion to complete a separate RHNA process on behalf of all jurisdictions in the county. The Solano Subregion adopted its final RHNA allocations on November 18, 2021. For more information see https://www.solanocounty.com/depts/rm/planning/regional_housing_needs_allocation_and_housing_element.asp

| | | | | | |
|------------------|-------|-------|-------|-------|--------|
| Solano Subregion | 2,803 | 1,612 | 1,832 | 4,745 | 10,992 |
|------------------|-------|-------|-------|-------|--------|

SONOMA COUNTY

| | | | | | |
|------------------------|----------------|---------------|---------------|----------------|----------------|
| Cloverdale* | 86 | 55 | 45 | 149 | 335 |
| Cotati | 60 | 34 | 39 | 101 | 234 |
| Healdsburg | 190 | 109 | 49 | 128 | 476 |
| Petaluma | 499 | 288 | 313 | 810 | 1,910 |
| Rohnert Park | 399 | 230 | 265 | 686 | 1,580 |
| Santa Rosa | 1,218 | 701 | 771 | 1,995 | 4,685 |
| Sebastopol | 55 | 31 | 35 | 92 | 213 |
| Sonoma | 83 | 48 | 50 | 130 | 311 |
| Unincorporated Sonoma* | 1,024 | 584 | 627 | 1,589 | 3,824 |
| Windsor | 385 | 222 | 108 | 279 | 994 |
| TOTAL | 114,442 | 65,892 | 72,712 | 188,130 | 441,176 |

* These allocations reflect the transfer approved by the ABAG Executive Board on November 17, 2022.



CHP/County speed monitors

- The County has two speed trailers, currently one is running and one is being repaired. The trailers are always in high demand.
- The speed trailer has been placed on Old Redwood Highway, Main Street, Petaluma Hill Road and Adobe.
- From the data collected by the trailers we have learned that Old Redwood Highway North has the least amount of speeders
- Main Street and Petaluma Hill Road have a higher rate of speeding traffic.
- We work in partnership with CHP on trailer placement and patrol and CHP has been a great partner in responding to our requests for ramped up patrols as needed.

AGRICULTURE
INDUSTRY
RECREATION



What can the community expect?

Current Phase

- Community Engagement (Comment period closes May 29th)
- Conduct Traffic Study

Future Phase

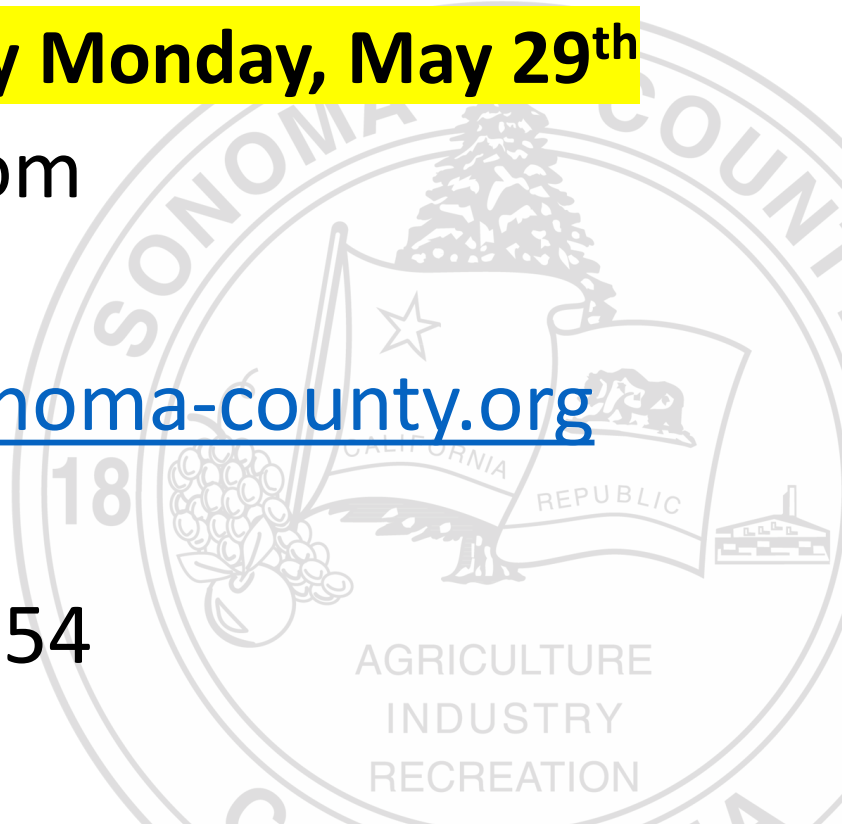
- **Study Development:** A Draft Study report will be developed and brought to the public for opportunities to provide review and comment
- **Next Steps:** Once the Study is complete, County staff will consider next steps for potential mobility improvements possibly seeking outside funding to assist with implementation.



Community feedback wanted

Comments due by Monday, May 29th

- Penngrovetraffic.com
- Email district2@sonoma-county.org
- Phone (707)565-3754





Thank you for joining us

