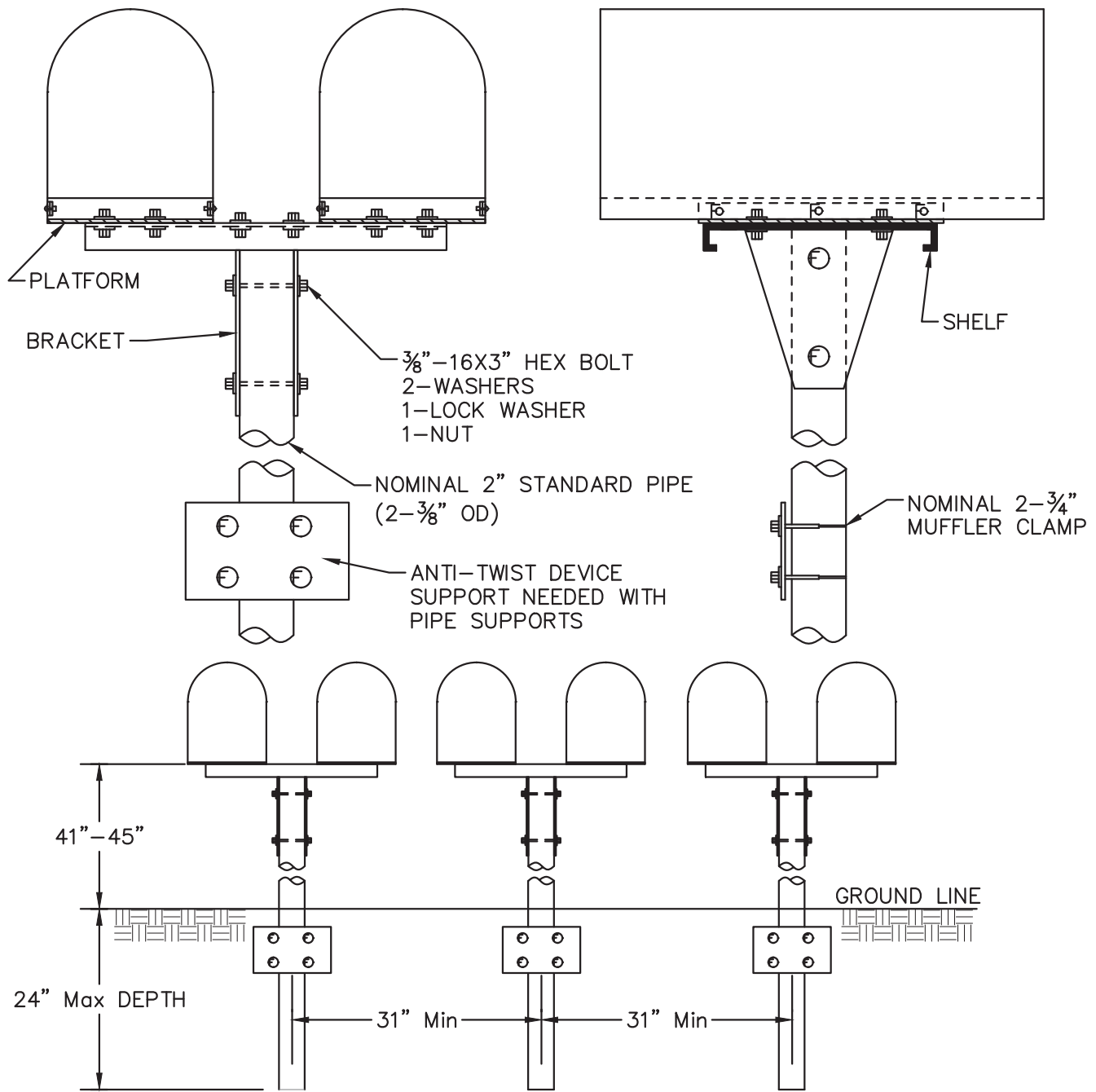


Xrefs: S:\ENGINEERING\Traffic\STAFF FOLDERS\Chet\Draft Revised Standards_Master.dwg Plot Date: Nov 12, 2020 at 08:10
 Path: S:\ENGINEERING\Traffic\STAFF FOLDERS\Chet\Draft Revised Standards_Master.dwg



SPACING FOR MULTIPLE POST INSTALLATION

NOTES:

1. SEE DRAWING NO. 304 FOR SERIES A SUPPORT HARDWARE DETAILS.
2. DIMENSIONS PER AASHTO "A GUIDE FOR ERECTING MAILBOXES ON HIGHWAYS".
3. FOR ROAD SETBACKS, SEE DRAWING NO. 306.
4. SPACING FOR MULTIPLE WOOD POST INSTALLATION IS THE SAME AS SHOWN ABOVE.
5. ALL HARDWARE SHALL BE GALVANIZED.

COUNTY OF SONOMA
 DEPARTMENT OF TRANSPORTATION
 AND PUBLIC WORKS

MAILBOX ASSEMBLY
 (DOUBLE)

DATE: MAY 2004

REVISED: JULY 2018

APPROVED BY:

SCALE:
NONE

DRAWING NO.
303

JH