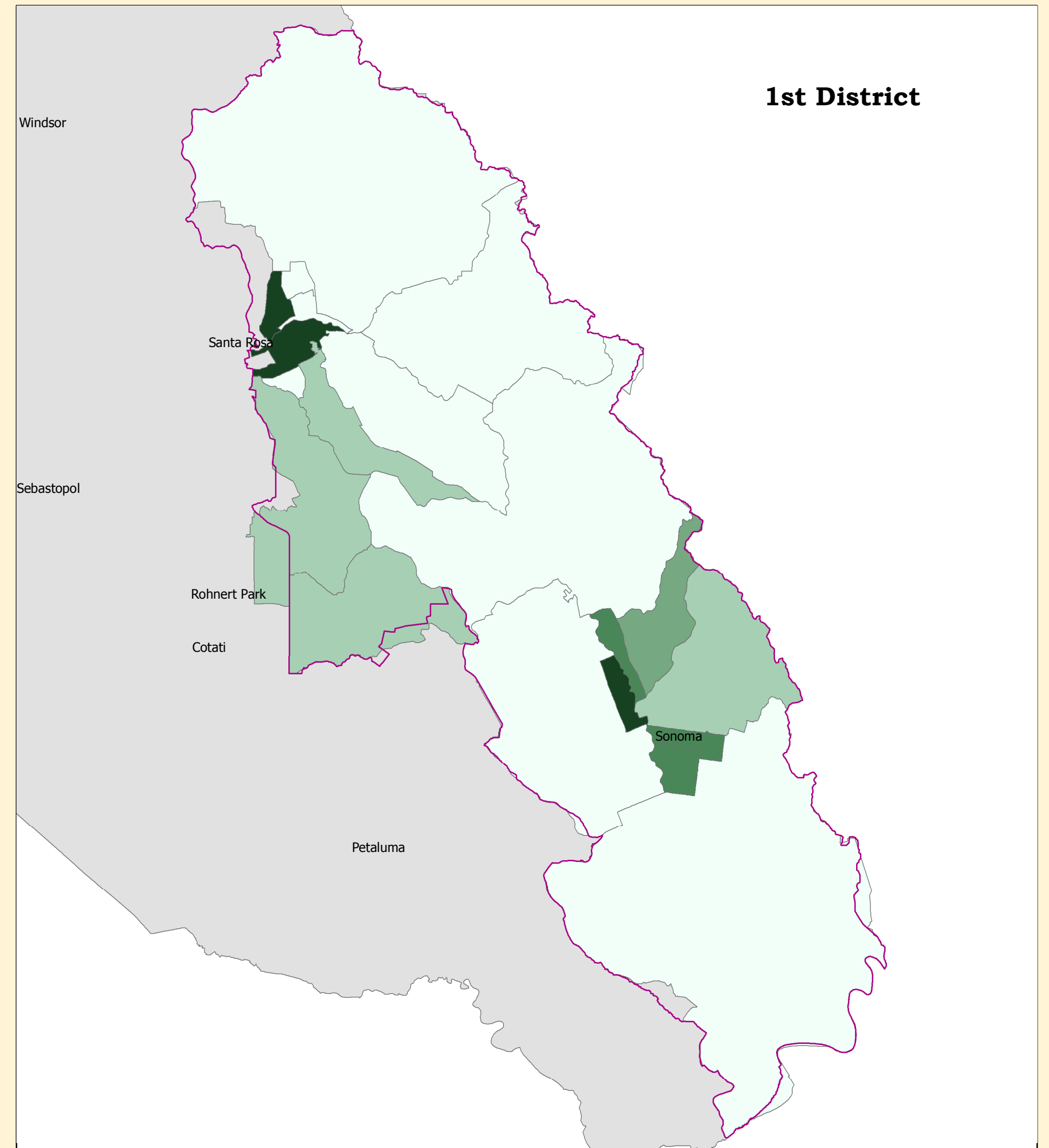
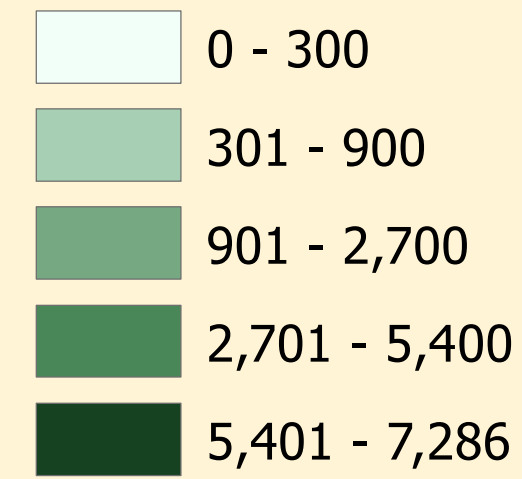


**District 1 - Population per Square Mile, 2010**



Sonoma County 2010 Demographic Profile Data Based on Census Tracts (some shared)				
	District 1	%	County	%
Population Per Sq Mile	37,513		132,238	
Total Population	95,311	20	483,878	100
White	79,370	83	371,412	77
Black	1,020	1	7,610	2
Hispanic/Latino	17,351	18	120,430	25
Under 5 Years	4,615	5	28,199	6
5 to 9 Years	5,125	5	29,263	6
10 to 14 Years	5,577	6	29,724	6
15 to 19 Years	5,527	6	33,298	7
Median Age	47		42	

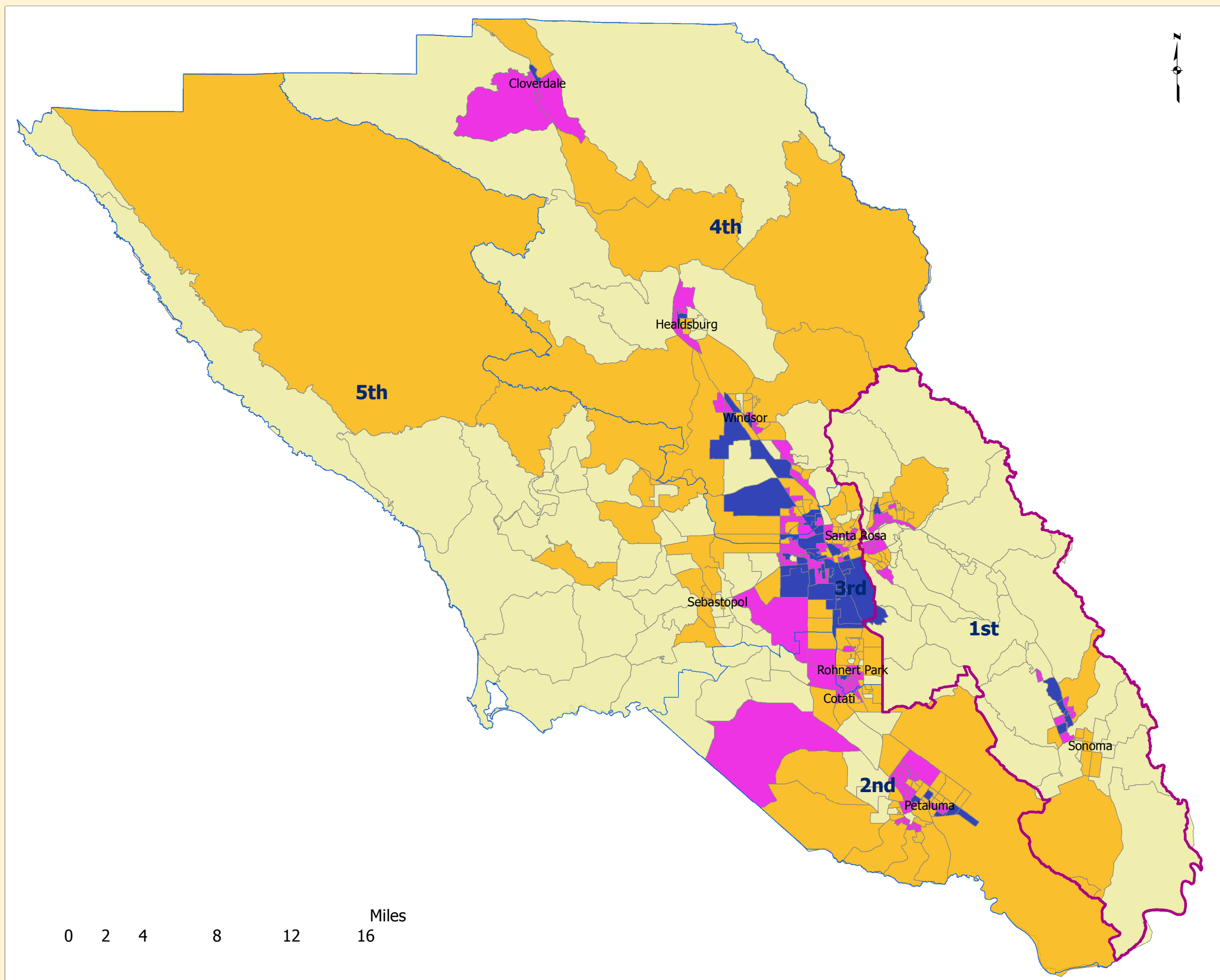
**Sonoma County**  
**County Overview with Supervisor District Breakdowns**  
**2010 Census Block Groups**

**District 1**

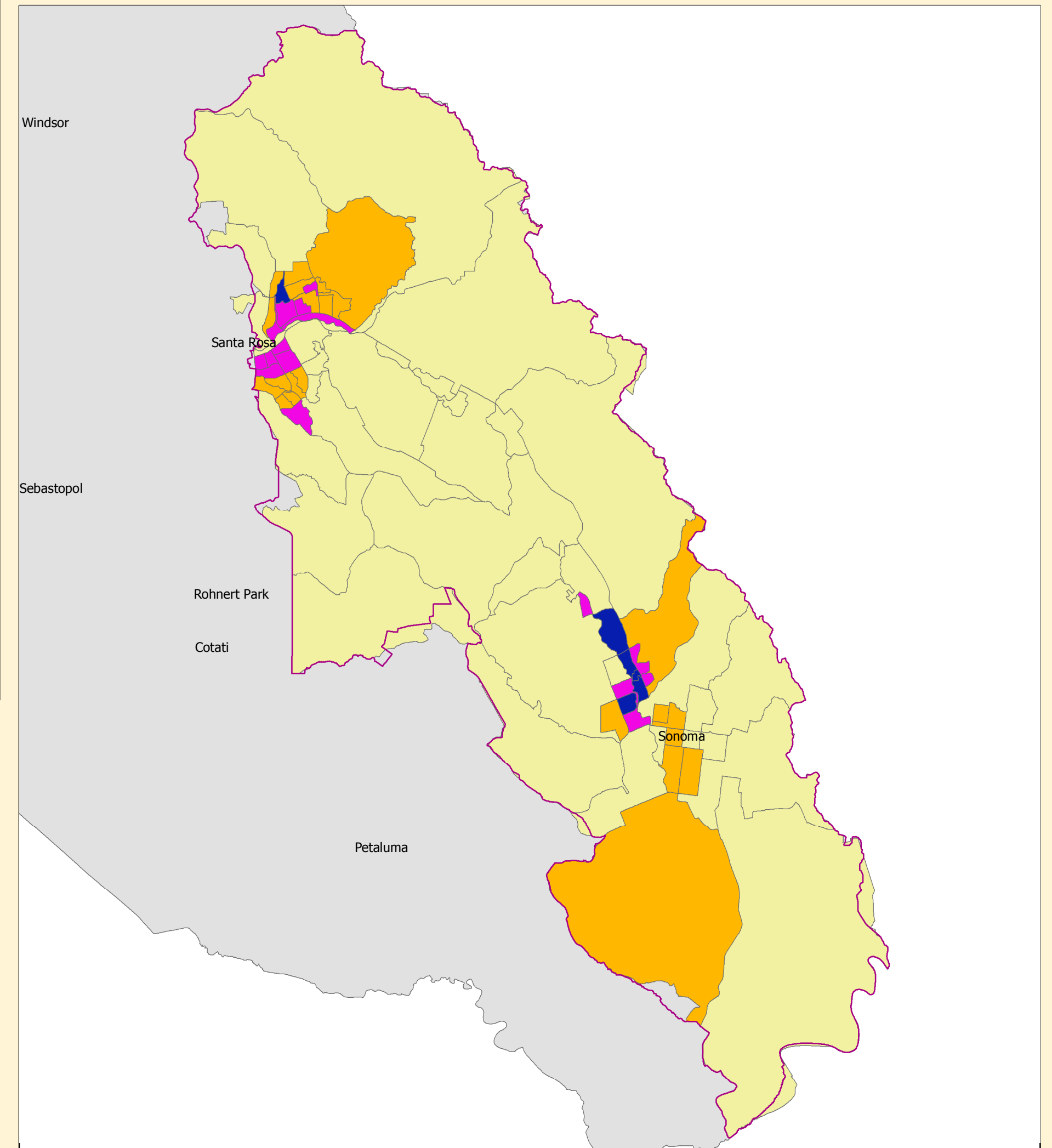
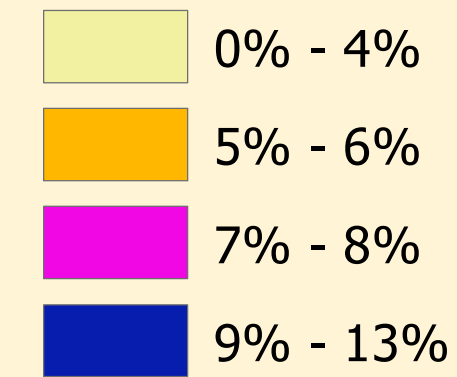


Map Created by Kit Tiara  
 kit.tiara@sonoma-county.org  
 HPPE, DHS, County of Sonoma  
 12.5.2013, US Census 2010, ISD GIS  
 Requestor: Brian Vaughn, Director HPPE, DHS  
 CAO\_SD1.mxd

This map has been developed for illustrative purposes only - represented data and maps are provided without warranty of any kind. While care has been taken to ensure that the supporting data is accurate, methodologies and conversions are not guaranteed.



**District 1 - Under 5**



Sonoma County 2010 Demographic Profile Data Based on Census Tracts (some shared)				
	District 1	%	County	%
Population Per Sq Mile	37,513		132,238	
Total Population	95,311	20	483,878	100
White	79,370	83	371,412	77
Black	1,020	1	7,610	2
Hispanic/Latino	17,351	18	120,430	25
Under 5 Years	4,615	5	28,199	6
5 to 9 Years	5,125	5	29,263	6
10 to 14 Years	5,577	6	29,724	6
15 to 19 Years	5,527	6	33,298	7
Median Age	47		42	

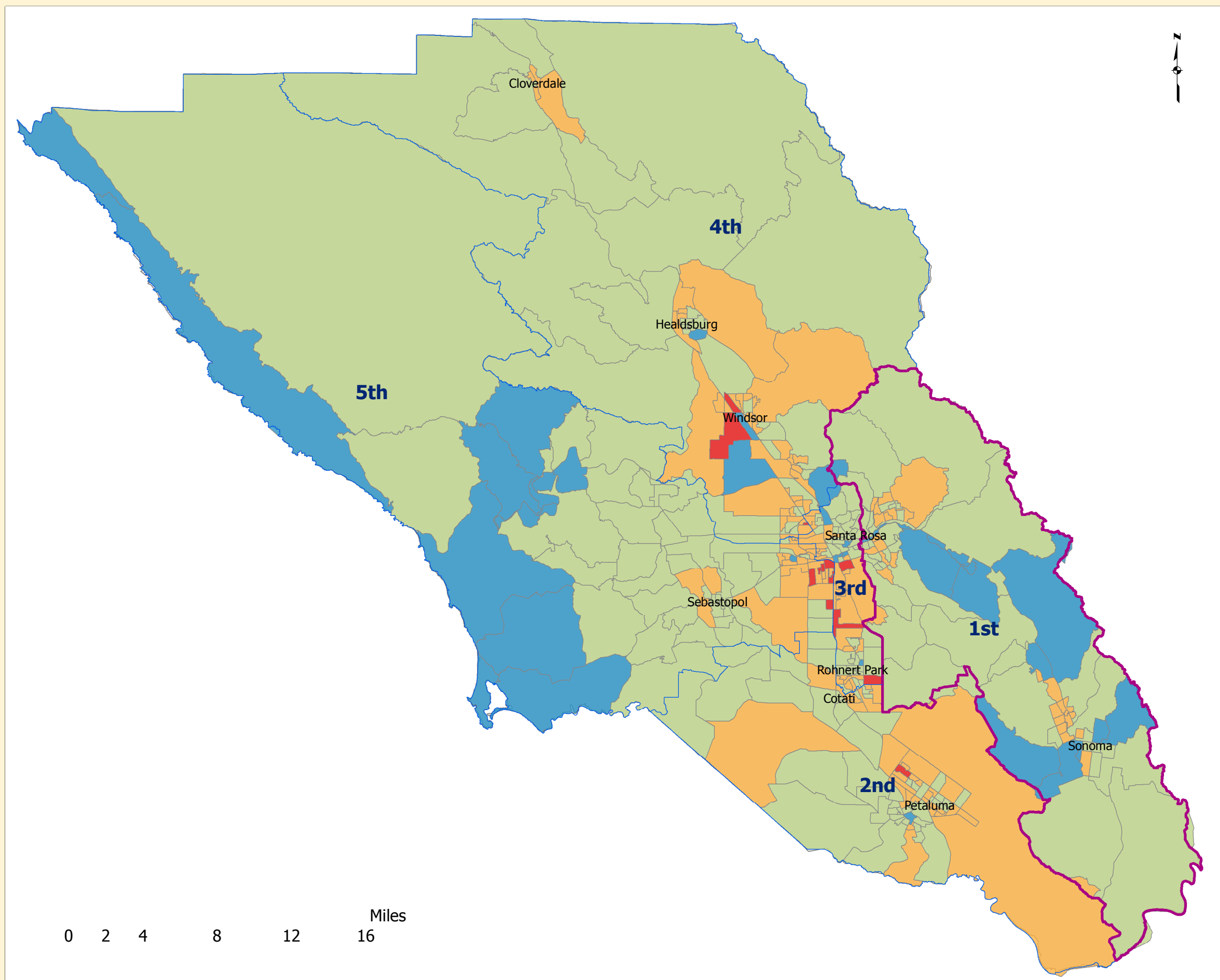
**Sonoma County**  
**County Overview with Supervisor District Breakdowns**  
**2010 Census Block Groups**

**District 1**

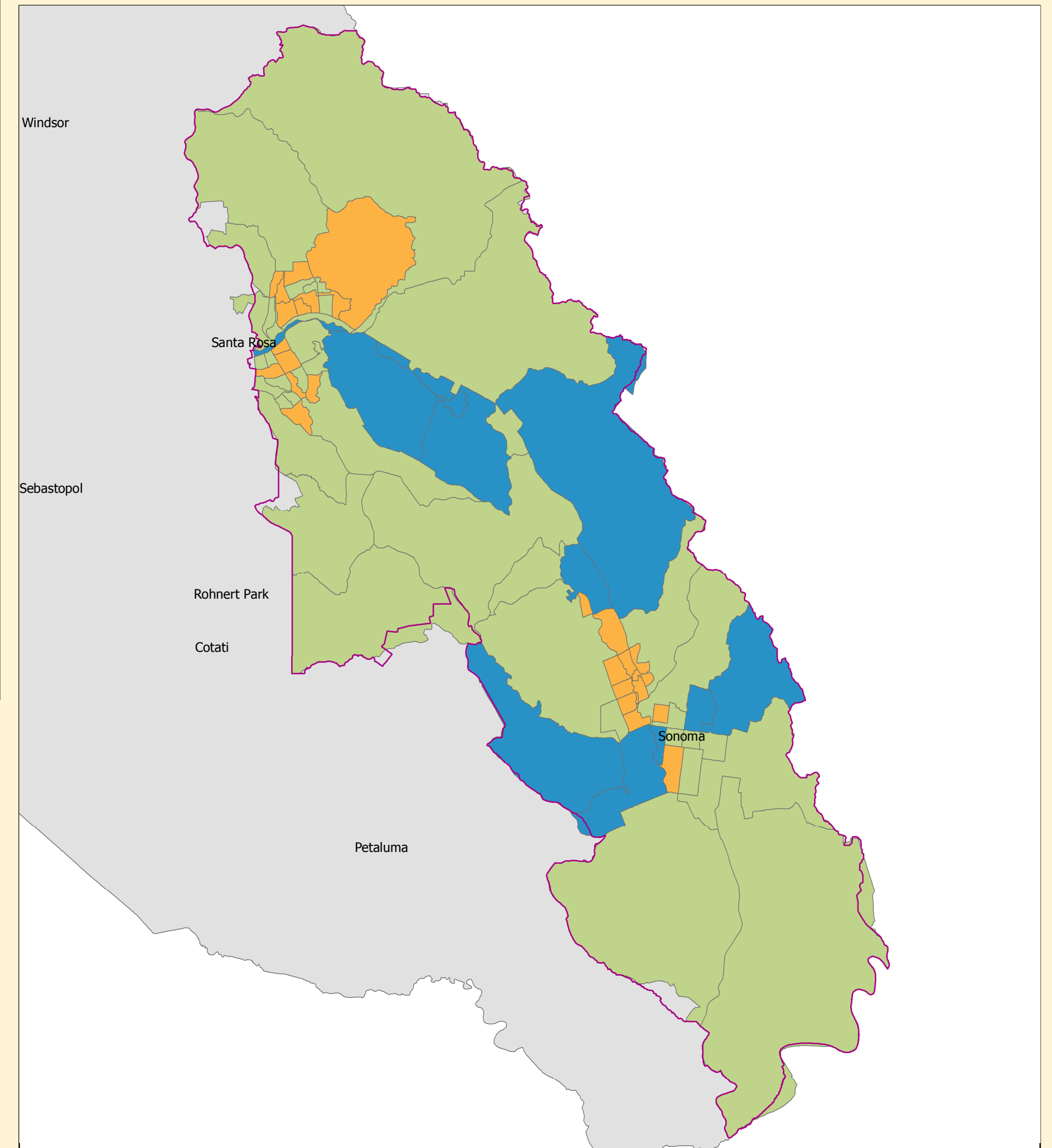
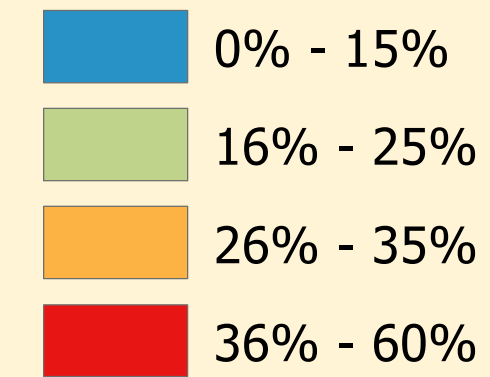


Map Created by Kit Tiara  
 kit.tiara@sonoma-county.org  
 HPPE, DHS, County of Sonoma  
 12.5.2013, US Census 2010, ISD GIS  
 Requestor: Brian Vaughn, Director HPPE, DHS  
 CAO\_SD1.mxd

This map has been developed for illustrative purposes only - represented data and maps are provided without warranty of any kind. While care has been taken to ensure that the supporting data is accurate, methodologies and conversions are not guaranteed.



**District 1 - Age 0 to 19**



0 2 4 8 12 16 Miles

Sonoma County 2010 Demographic Profile Data Based on Census Tracts (some shared)				
	District 1	%	County	%
Population Per Sq Mile	37,513		132,238	
Total Population	95,311	20	483,878	100
White	79,370	83	371,412	77
Black	1,020	1	7,610	2
Hispanic/Latino	17,351	18	120,430	25
Under 5 Years	4,615	5	28,199	6
5 to 9 Years	5,125	5	29,263	6
10 to 14 Years	5,577	6	29,724	6
15 to 19 Years	5,527	6	33,298	7
Median Age	47		42	

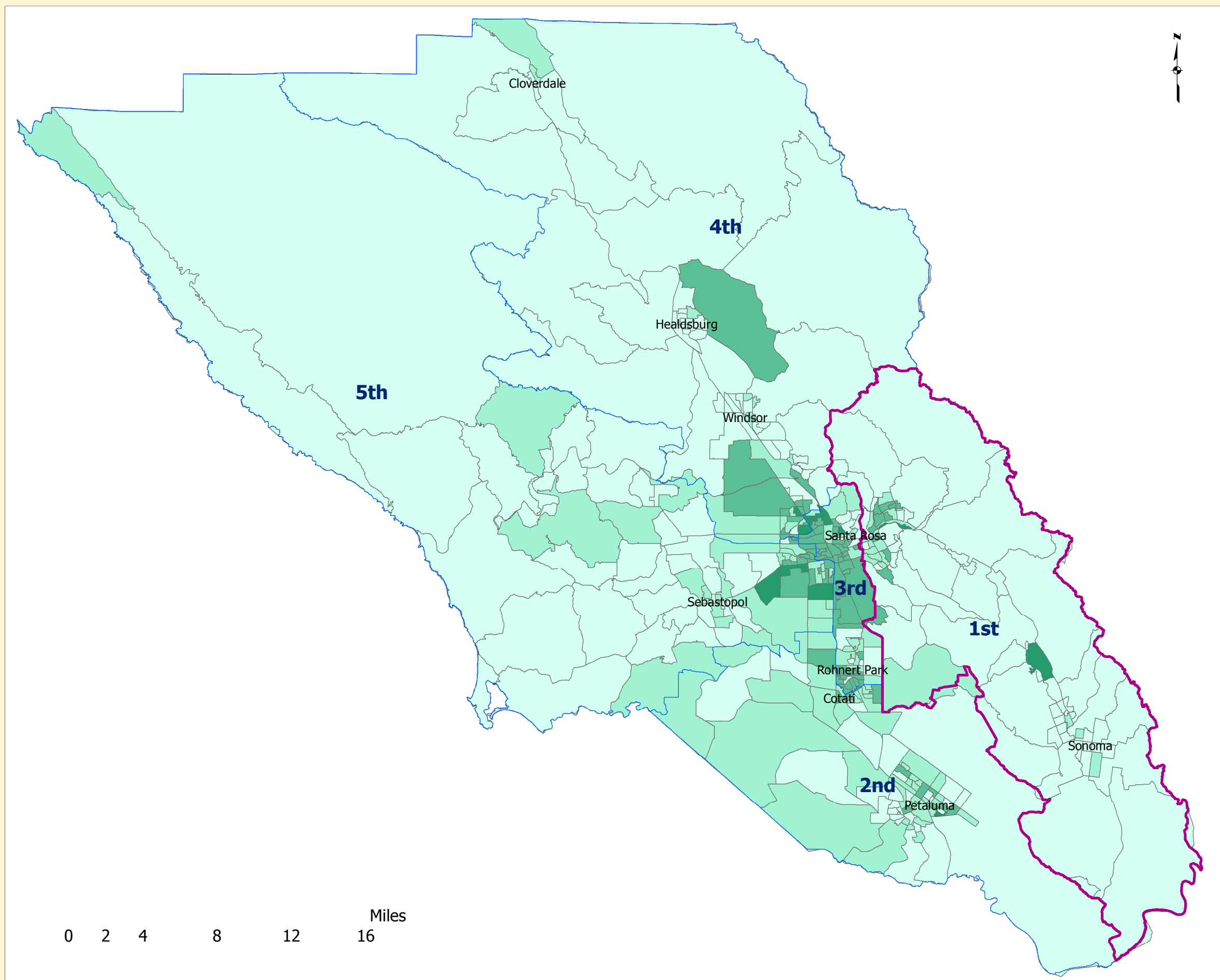
**Sonoma County**  
**County Overview with Supervisor District Breakdowns**  
**2010 Census Block Groups**

**District 1**

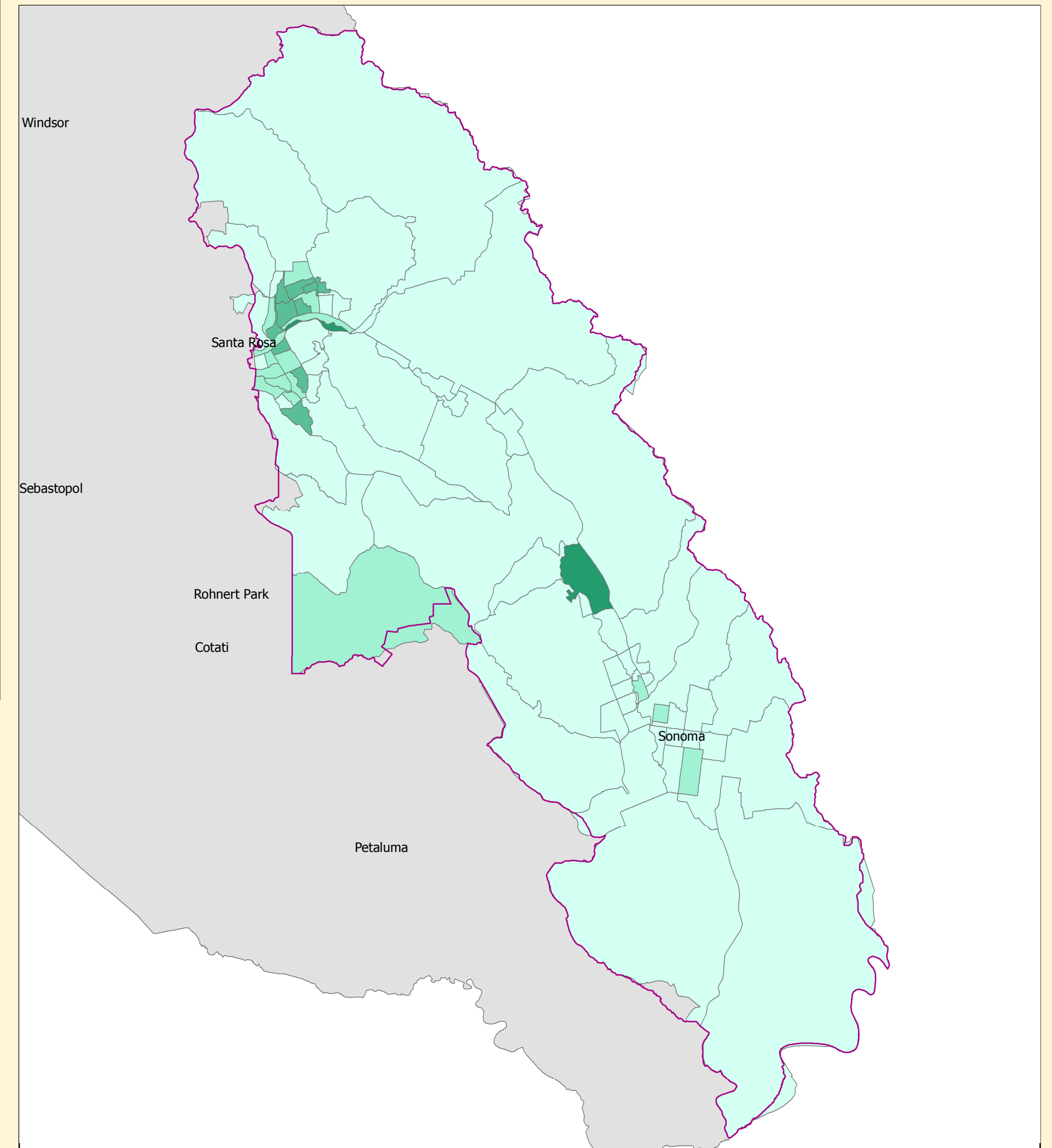
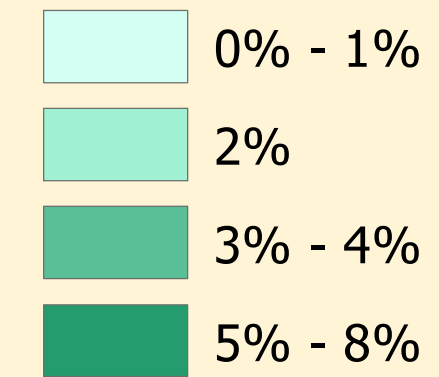


Map Created by Kit Tiara  
 kit.tiara@sonoma-county.org  
 HPPE, DHS, County of Sonoma  
 12.5.2013, US Census 2010, ISD GIS  
 Requestor: Brian Vaughn, Director HPPE, DHS  
 CAO\_SD1.mxd

This map has been developed for illustrative purposes only - represented data and maps are provided without warranty of any kind. While care has been taken to ensure that the supporting data is accurate, methodologies and conversions are not guaranteed.



### District 1 - Ethnicity - Black, Pop 2010



Sonoma County 2010 Demographic Profile Data Based on Census Tracts (some shared)				
	District 1	%	County	%
Population Per Sq Mile	37,513		132,238	
Total Population	95,311	20	483,878	100
White	79,370	83	371,412	77
Black	1,020	1	7,610	2
Hispanic/Latino	17,351	18	120,430	25
Under 5 Years	4,615	5	28,199	6
5 to 9 Years	5,125	5	29,263	6
10 to 14 Years	5,577	6	29,724	6
15 to 19 Years	5,527	6	33,298	7
Median Age	47		42	

## Sonoma County

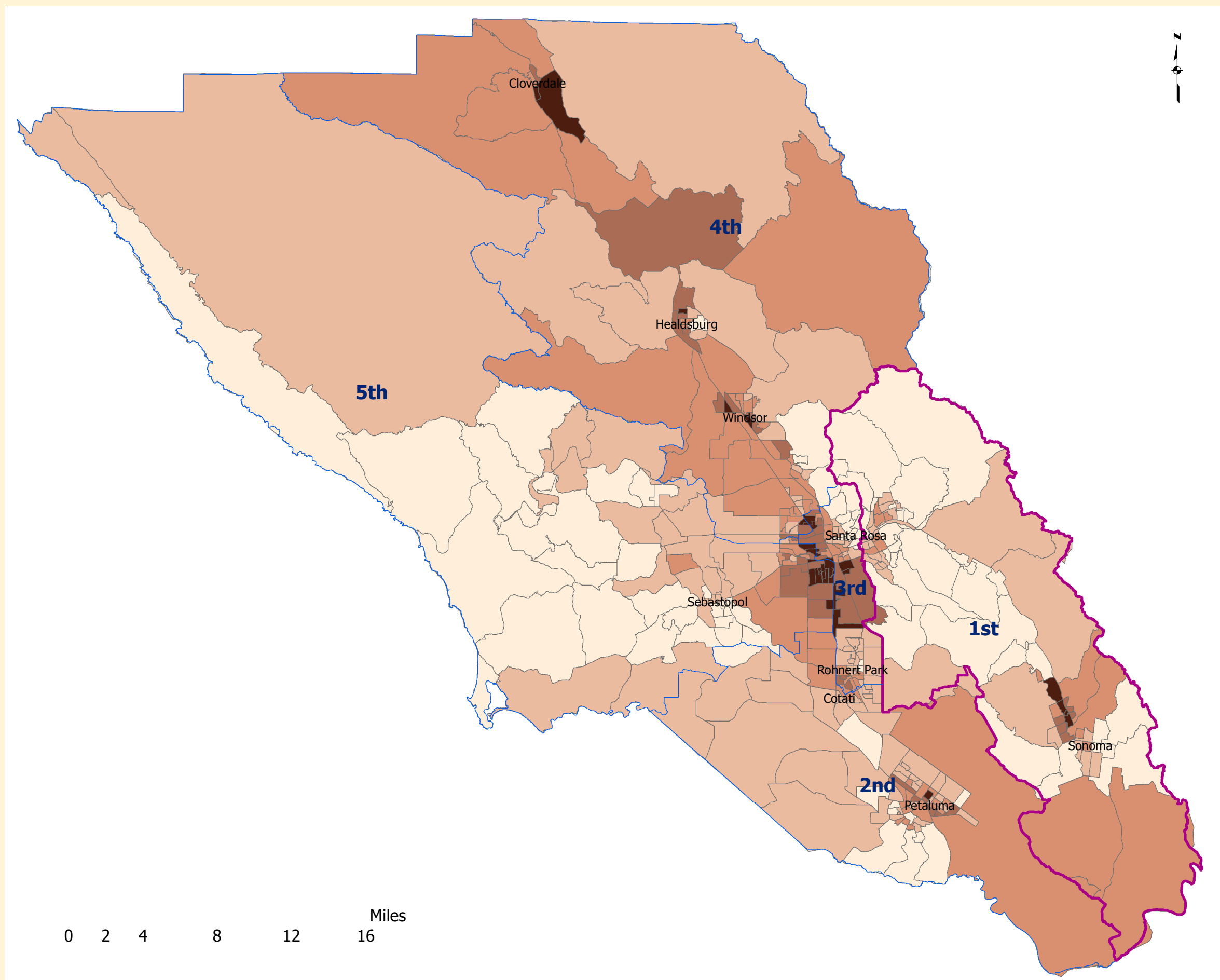
### County Overview with Supervisor District Breakdowns 2010 Census Block Groups

### District 1

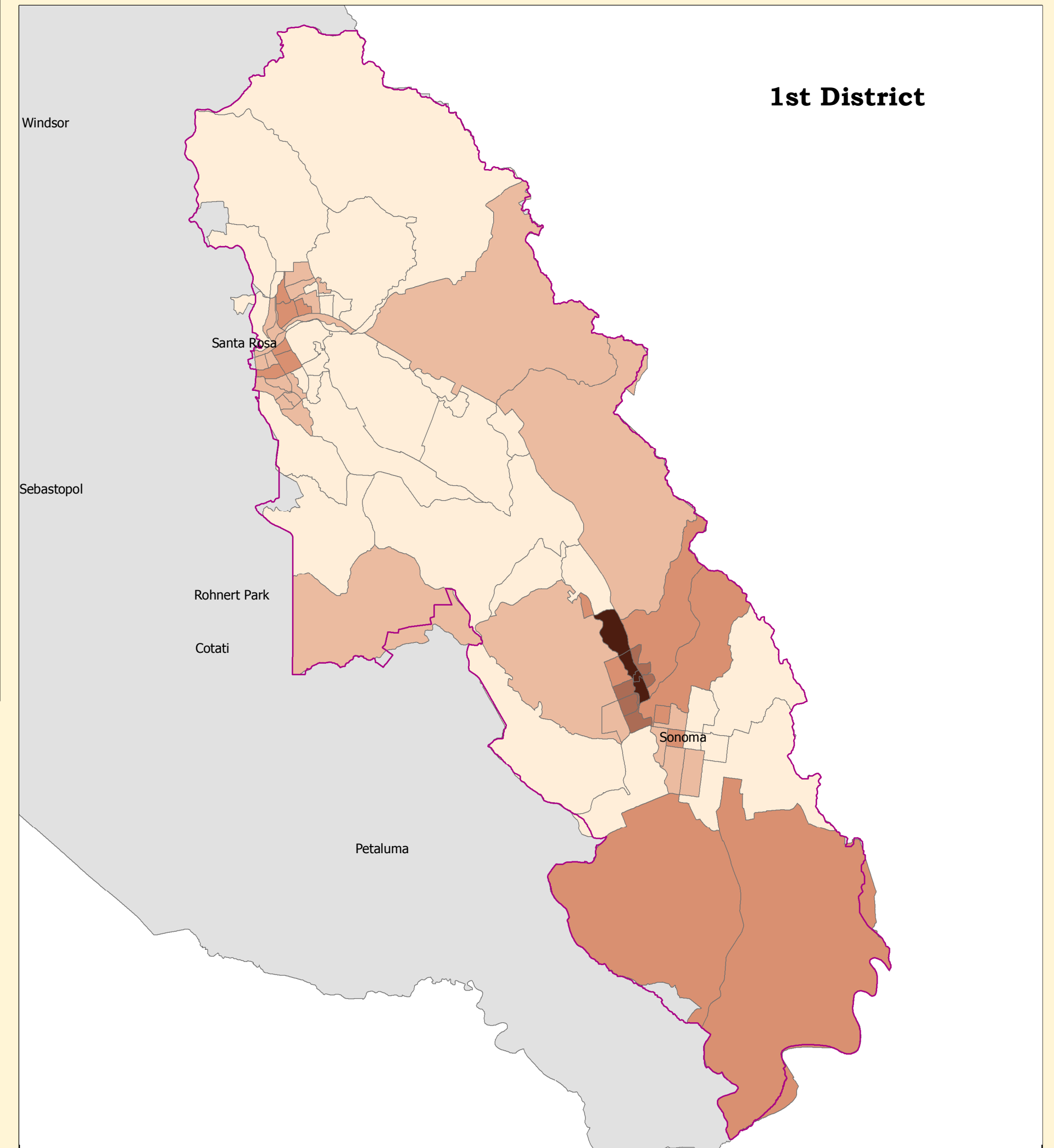
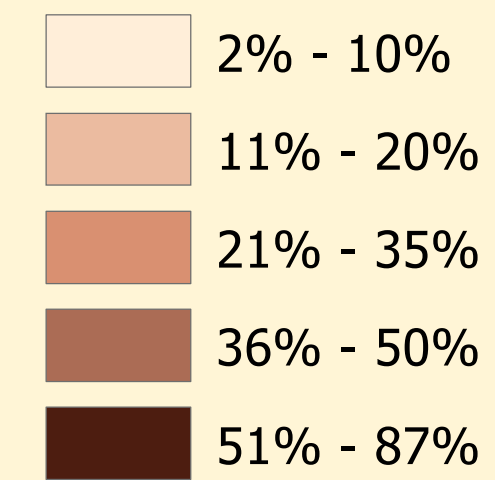


Map Created by Kit Tiara  
 kit.tiara@sonoma-county.org  
 HPPE, DHS, County of Sonoma  
 12.5.2013, US Census 2010, ISD GIS  
 Requestor: Brian Vaughn, Director HPPE, DHS  
 CAO\_SD1.mxd

This map has been developed for illustrative purposes only - represented data and maps are provided without warranty of any kind. While care has been taken to ensure that the supporting data is accurate, methodologies and conversions are not guaranteed.



**District 1 - Ethnicity - Hispanic/Latino, Pop 2010**



Sonoma County 2010 Demographic Profile Data Based on Census Tracts (some shared)				
	District 1	%	County	%
Population Per Sq Mile	37,513		132,238	
Total Population	95,311	20	483,878	100
White	79,370	83	371,412	77
Black	1,020	1	7,610	2
Hispanic/Latino	17,351	18	120,430	25
Under 5 Years	4,615	5	28,199	6
5 to 9 Years	5,125	5	29,263	6
10 to 14 Years	5,577	6	29,724	6
15 to 19 Years	5,527	6	33,298	7
Median Age	47		42	

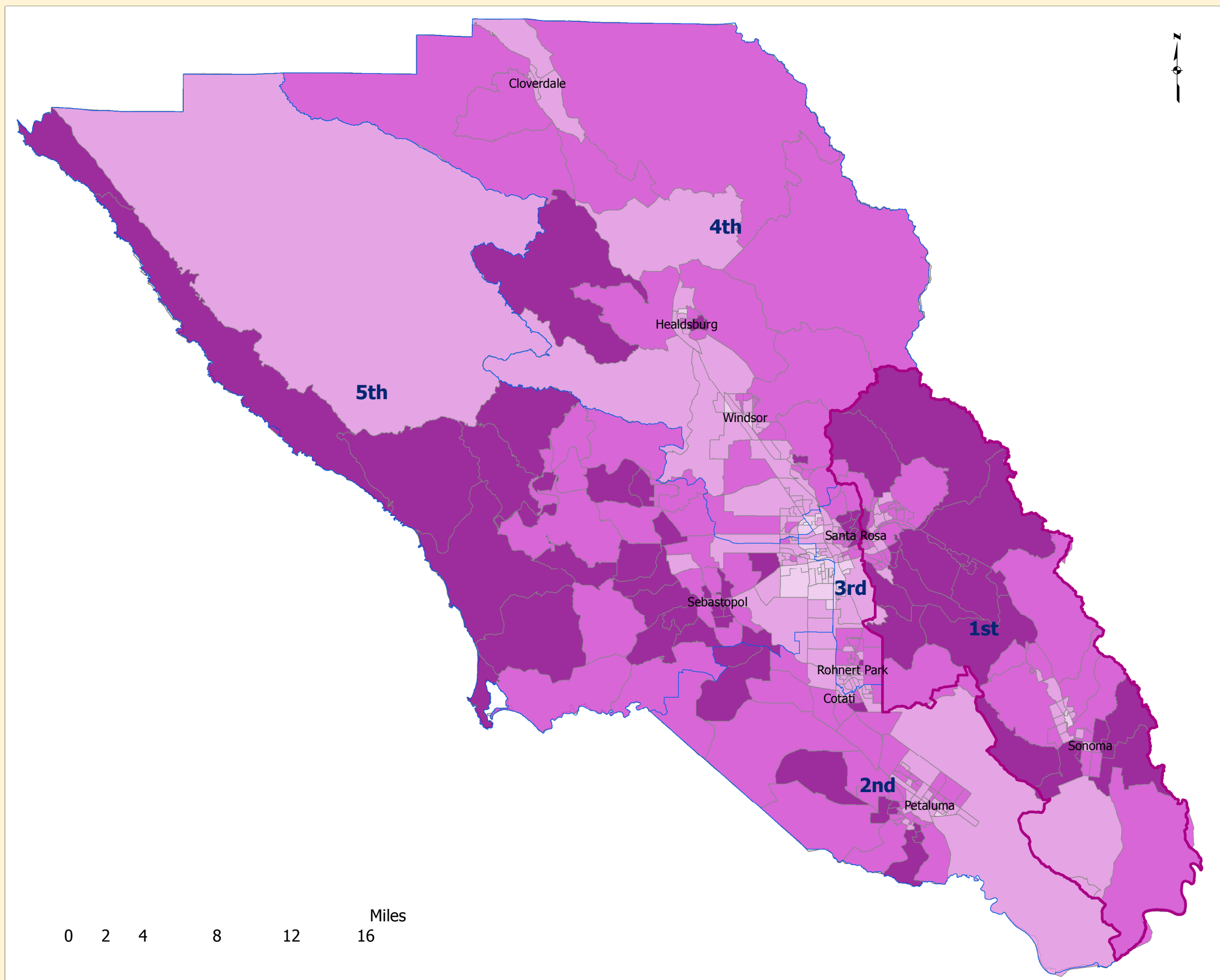
**Sonoma County**  
**County Overview with Supervisor District Breakdowns**  
**2010 Census Block Groups**

**District 1**

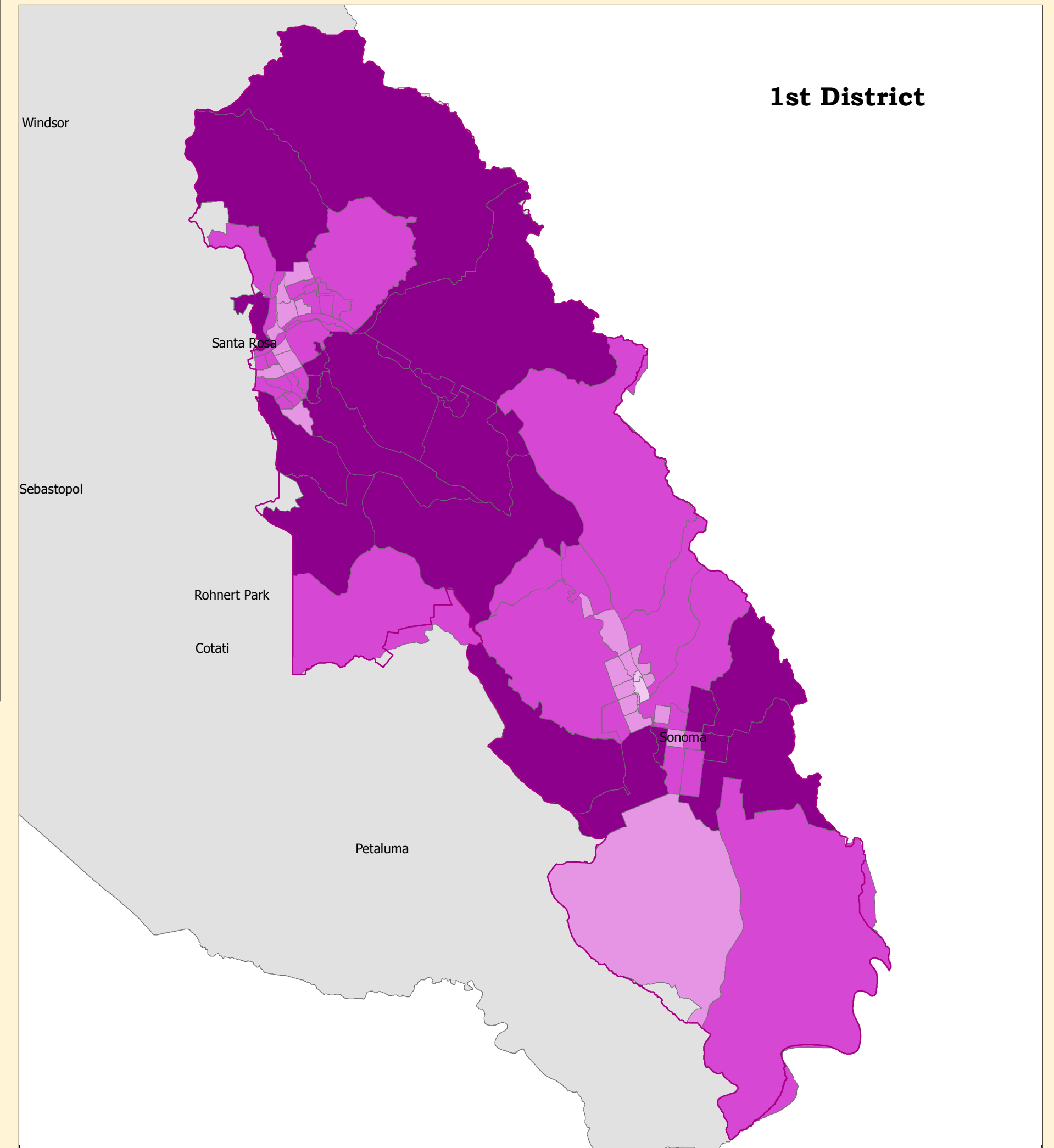
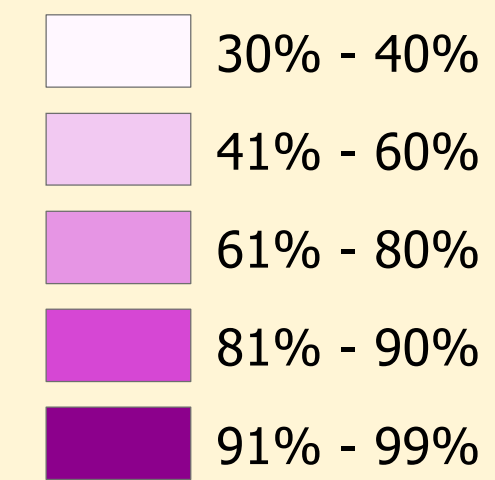


Map Created by Kit Tiara  
 kit.tiara@sonoma-county.org  
 HPPE, DHS, County of Sonoma  
 12.5.2013, US Census 2010, ISD GIS  
 Requestor: Brian Vaughn, Director HPPE, DHS  
 CAO\_SD1.mxd

This map has been developed for illustrative purposes only - represented data and maps are provided without warranty of any kind. While care has been taken to ensure that the supporting data is accurate, methodologies and conversions are not guaranteed.



**District 1 - Ethnicity - White, Pop 2010**



Sonoma County 2010 Demographic Profile Data Based on Census Tracts (some shared)				
	District 1	%	County	%
Population Per Sq Mile	37,513		132,238	
Total Population	95,311	20	483,878	100
White	79,370	83	371,412	77
Black	1,020	1	7,610	2
Hispanic/Latino	17,351	18	120,430	25
Under 5 Years	4,615	5	28,199	6
5 to 9 Years	5,125	5	29,263	6
10 to 14 Years	5,577	6	29,724	6
15 to 19 Years	5,527	6	33,298	7
Median Age	47		42	

**Sonoma County**  
**County Overview with Supervisor District Breakdowns**  
**2010 Census Block Groups**

**District 1**



Map Created by Kit Tiara  
 kit.tiara@sonoma-county.org  
 HPPE, DHS, County of Sonoma  
 12.5.2013, US Census 2010, ISD GIS  
 Requestor: Brian Vaughn, Director HPPE, DHS  
 CAO\_SD1.mxd

This map has been developed for illustrative purposes only - represented data and maps are provided without warranty of any kind. While care has been taken to ensure that the supporting data is accurate, methodologies and conversions are not guaranteed.