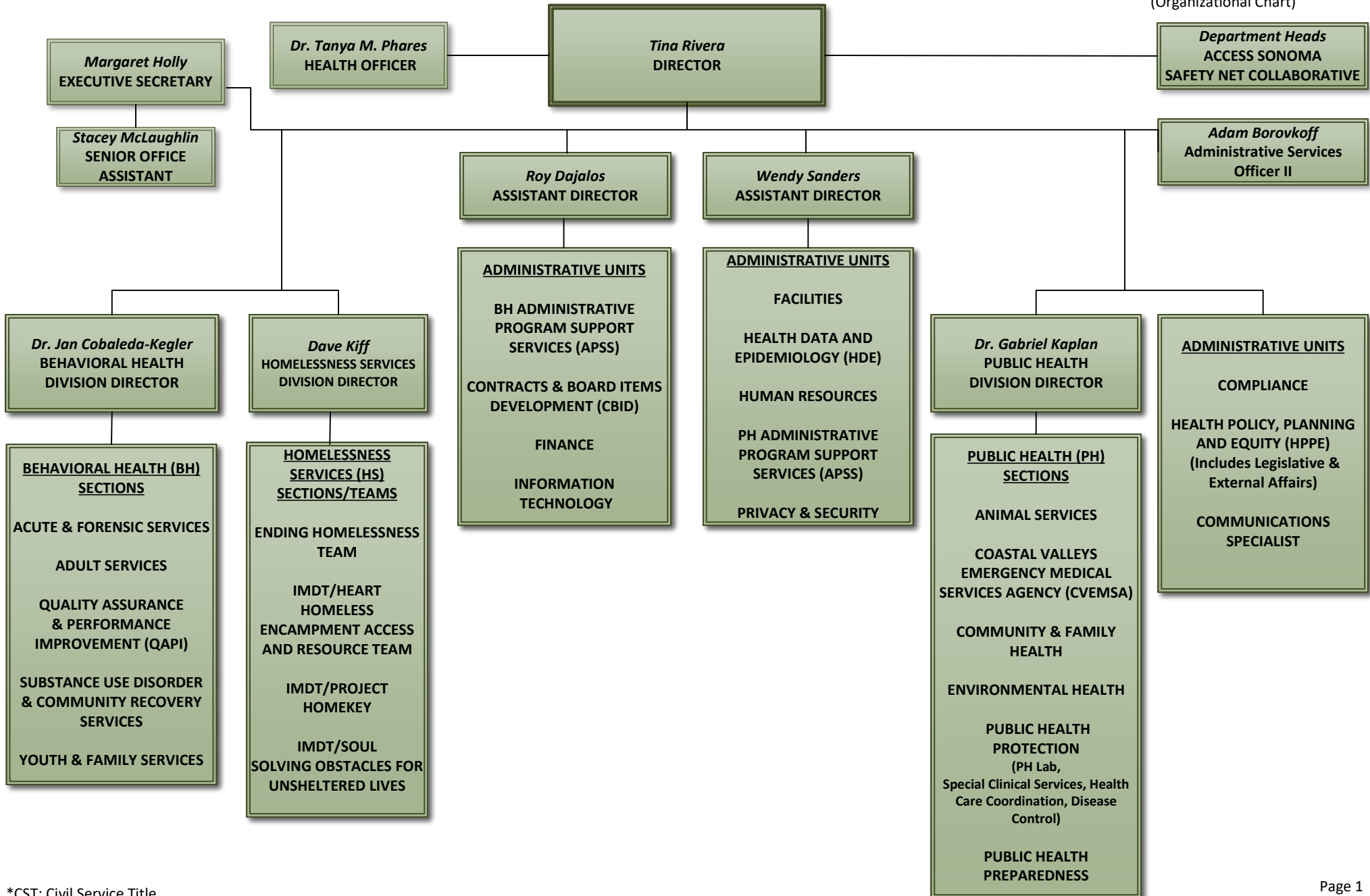




# DEPARTMENT OF HEALTH SERVICES

Director: Tina Rivera  
Issue Date: February 1, 2024  
(Organizational Chart)



## Department of Health Services

- Tina Rivera, Director
  - Dr. Tanya M. Phares, Health Officer
  - Department Heads, Access Sonoma Safety Net Collaborative
  - Administrative Services Officer II, Adam Borovkoff
  - Margaret Holly, Executive Secretary
    - Stacey McLaughlin, Senior Office Assistant
  - Roy Dajalos, Assistant Director
    - Administrative Units
      - BH Administrative Program Support Services (APSS)
      - Contracts & Board Items Development (CBID)
      - Finance
      - Information Technology
  - Wendy Sanders, Assistant Director
    - Administrative Units
      - Facilities
      - Health Data & Epidemiology (HDE)
      - Human Resources
      - PH Administrative Program Support Services (APSS)
      - Privacy & Security
  - Dr. Jan Cobaleda-Kegler, Behavioral Health Division Director
    - Behavioral Health (BH) Sections
      - Acute & Forensic Services
      - Adult Services
      - Quality Assurance & Performance Improvement (QAPI)
      - Substance Use Disorder & Community Recovery Services
      - Youth & Family Services
  - Dave Kiff, Homelessness Services Division Director
    - Homelessness Services (HS) Sections/Teams
      - Ending Homelessness Team
      - IMDT/HEART Homeless Encampment Access and Resource Team
      - IMDT/PROJECT HOMEKEY
      - IMDT/SOUL SOLVING OBSTACLES FOR UNSHELTERED LIVES
  - Dr. Gabriel Kaplan, Public Health Division Director
    - Public Health (PH) Sections
      - Animal Services
      - Coastal Valleys Emergency Medical Services Agency (CVEMSA)
      - Community & Family Health
      - Environmental Health
      - Public Health Protection (PH Lab, Special Clinical Services, Health Care Coordination, Disease Control)
      - Public Health Preparedness
  - Administrative Units
    - Compliance
    - Health Policy Planning and Equity (HPPE), (Includes Legislative & External Affairs)
    - Communications Specialist